



# Safety Tip of the Week

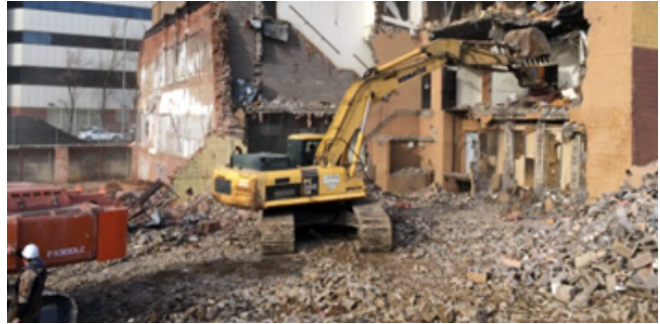
## California Safety in Demolition

One of the most dangerous times in any worker's career is when he or she is working to demolish something. Demolition involves hazards due to unknown factors that make demolition work particularly dangerous.

### Hazards:

Proper planning is essential to ensure a demolition operation is conducted with no accidents or injuries. This includes, but is not limited to:

- An engineering survey completed by a qualified person before any demolition work takes place, including the condition of the structure and the possibility of an unplanned collapse;
- Locating, securing, and/or relocating any nearby utilities; for help, call 811 before you dig;
- Fire prevention and evacuation plan;
- First Aid and Emergency Medical Services; and
- An assessment of health hazards completed before any demolition work takes place.



### Provide the Right Protection and Equipment:

The employer must determine what Personal Protective Equipment (PPE) will be required. In demolition operations, PPE may include:

- Eye, face, head, hand, foot protection;
- Respiratory protection;
- Hearing protection;
- Personal Fall Arrest Systems (PFAS); or
- Other protective clothing (for example, for cutting or welding operations).

It is not enough to provide PPE. Employees must be trained on the selection, use, fitting, inspection, maintenance, and storage of PPE.

***THE SAFEST RISK IS THE ONE YOU DIDN'T TAKE!!***